

Welcome to Rosebank Lodge, Merton

Home profile number: 681



Service type: Residential Home **Age:** 18+ **Occupancy:** 13 **Gender:** Mixed

What makes this home unique:

Our sensory room is a special part of our home, loved by the people we support here. It offers a quiet and calm space where people can relax. We pride ourselves on offering a homely feel here and many of the people we support have been with us for years. When not in the garden enjoying the outside space, we love board games and jigsaws, and in the Summer time taking a trip to the seaside at Brighton. Our music night with the music man is a weekly highlight in the home.

Home facilities:

- Lift and stairlift for accessibility needs
- Ensuite and shared bathrooms
- Spacious garden
- Sensory Room
- Transport vehicle for trips
- Wi-fi for the people we support

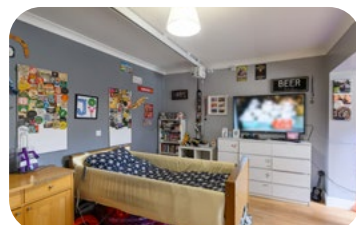
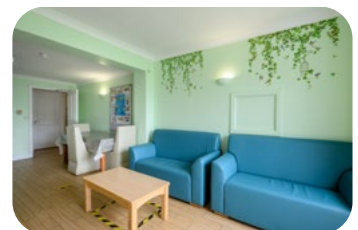
Location:

Located in Mitcham, Rosebank Lodge is close to lots of local amenities including shops, cafes, pubs, parks and the local leisure centre. Mitcham tram stop is just 2 minutes and mainline train and tube stops are within a 5 minute walk providing easy options for getting into and around London.

Who we support:

At this home we can support people with:

- Autism
- Behaviours that may challenge
- Complex needs
- Epilepsy
- Learning disabilities
- Mental health
- Physical disabilities
- Profound and multiple learning disabilities (PMLD)
- Registered to provide personal care



About us

At Achieve together we believe in the extraordinary potential of every person. Our purpose is to create opportunities for people we support to live fulfilling lives filled with joy, independence and personal fulfilment.

We celebrate individuality, nurture confidence and foster supportive environments where everyone can thrive. We are also deeply proud of our extraordinary teams. Every day, they go above and beyond to provide exceptional support – and we invest in their growth, empowering them to build rewarding careers with us.

From the home:

“I love to interact with the people we support, find out how they want to be supported and make them really feel at home and very relaxed. The team here work very well together, listening and sharing opinions and ideas to help support the people who live here”.

- Home Manager

“The house has changed a lot over the 17 years that my son has lived here, it feels very homely”.

- Family Member

Wheel of engagement

Our central person-centred planning tool that guides us when supporting people. Read more about our framework and how we provide positive behaviour support (PBS).



Find out more

Please contact our referrals hub on:
03301 755 332
referrals@achievetogether.co.uk



Find us on social media



Scan the QR to visit our website

Our values

Scan the QR code to hear from our teams and the people we support about life at Achieve together.

