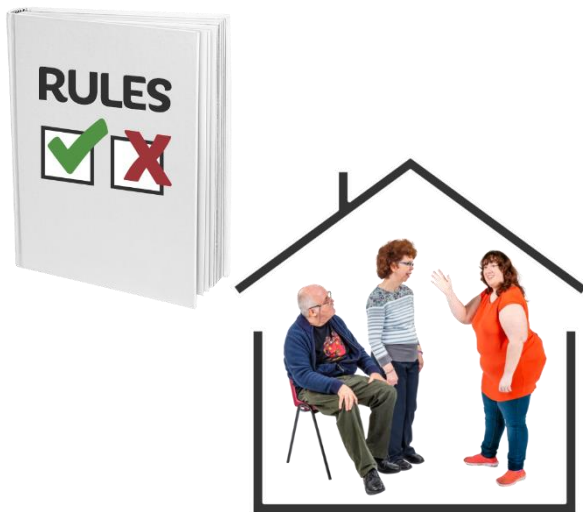


SUPPORTED LIVING VISITS



There are new rules
about visiting people
in Supported Living
homes.



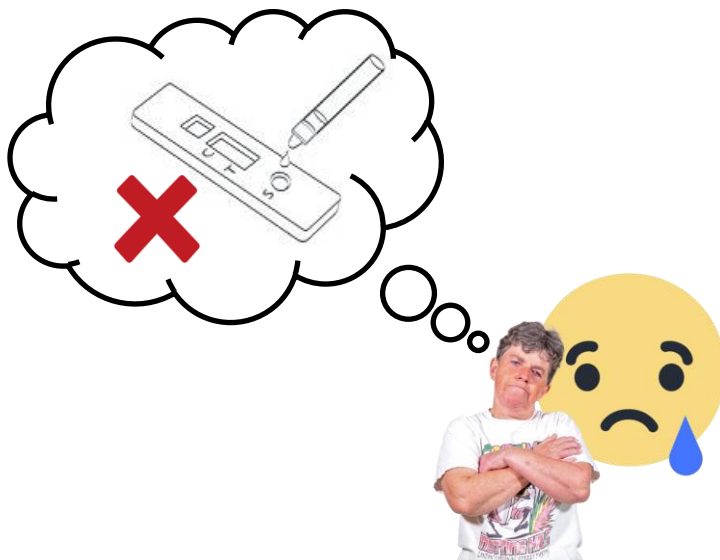
You can read the full
text from the
government here.



Visitors can come
into Supported Living
homes after having a
negative LFD
coronavirus test.



LFD stands for
Lateral Flow Device.
This test can tell if
someone has
coronavirus very
quickly.



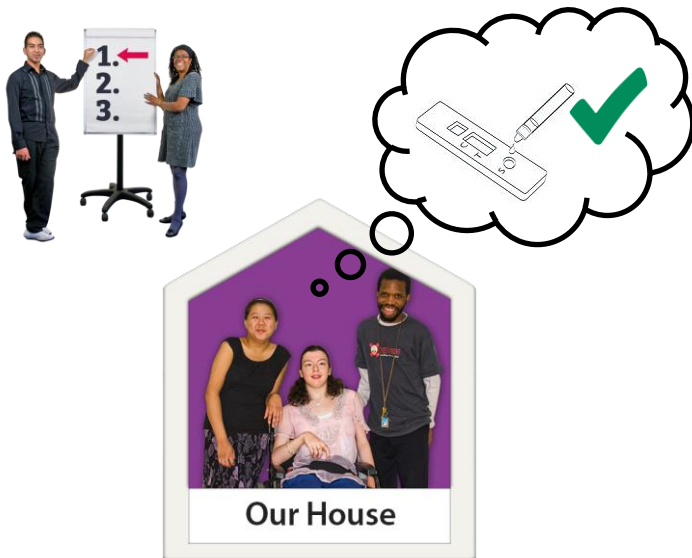
Sadly, some of our
homes still cannot
get LFD tests.



We want to make
sure that everyone
gets to see their
loved ones safely.



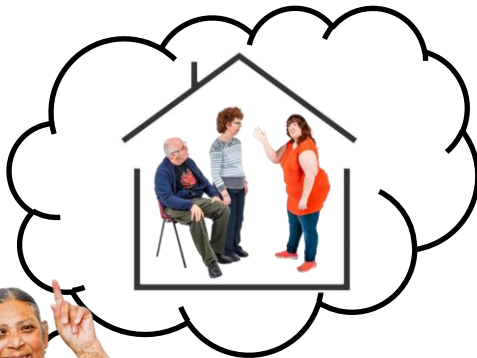
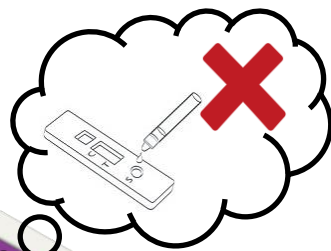
This is why we will be following this plan:



- In Supported Living homes that have LFD tests...



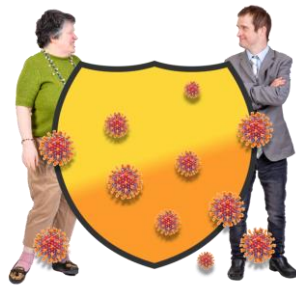
..people will be supported to do a Named Visitor Risk Assessment.



A **Risk Assessment** is a document which helps you think about risks.

- In Supported Living homes that don't have LFD tests...

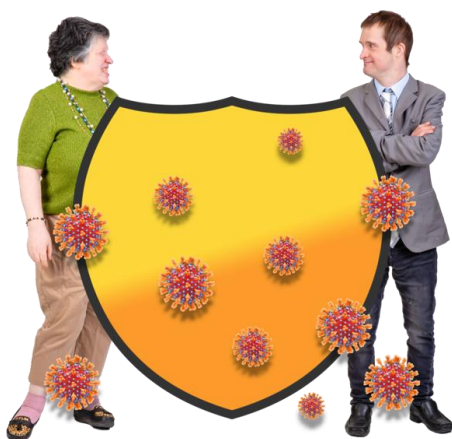
..if the person is able to make a decision, they can choose to have a visitor.



The manager will have to do a Risk Management Plan.



A Risk Management Plan is when you plan what to do to make risks smaller.



This will help make the risk of getting coronavirus smaller.



If someone decides
to leave their
Supported Living
home to visit family...



..it must also be
planned how to
protect others from
coronavirus when
the person returns.



If someone cannot
make their own
decisions about
having a visitor...



..we cannot go
against the rules of
the government.



This means the
person won't be able
to have visitors.



If we think it will help
the person to have a
visitor...



..we will do a Best Interest decision.



A Best Interest decision is when the important people in a person's life and their Social Worker decide together what is best for the person.



If it is decided that the person can have a visitor...



..a Named Visitor
Risk Assessment will
be done.



We will do
everything we can to
make sure that
people can see their
loved ones.



If you have any
questions, please get
in touch.