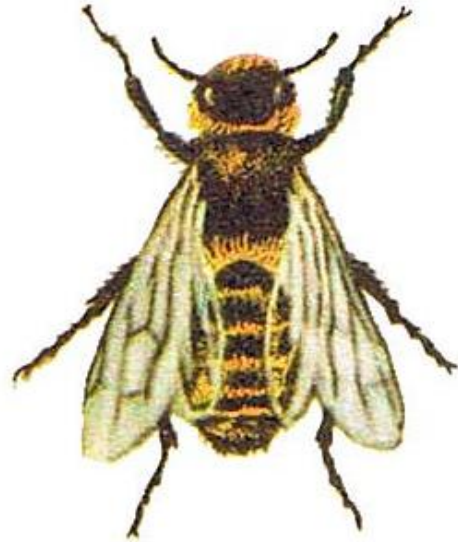


# How to make a bee hotel



Not all bees live in hives. Some bees like to live alone in small holes and tunnels.



mason bee



leafcutter bee



yellow faced bee

You can make a simple hotel for these bees to live in!



## You will need:

- An empty plastic bottle (small or large)
- Cardboard
- Sticky Tape
- Pencil
- Twine or string
- Scissors



## Step 1

- Cut the bottle in half. You will be using the bottom half of the bottom.



## Step 2:

- Carefully poke a hole in the bottle half.
- Poke the hole towards the bottom end of the bottle so that it tips downward when hanging To stop rain getting in.



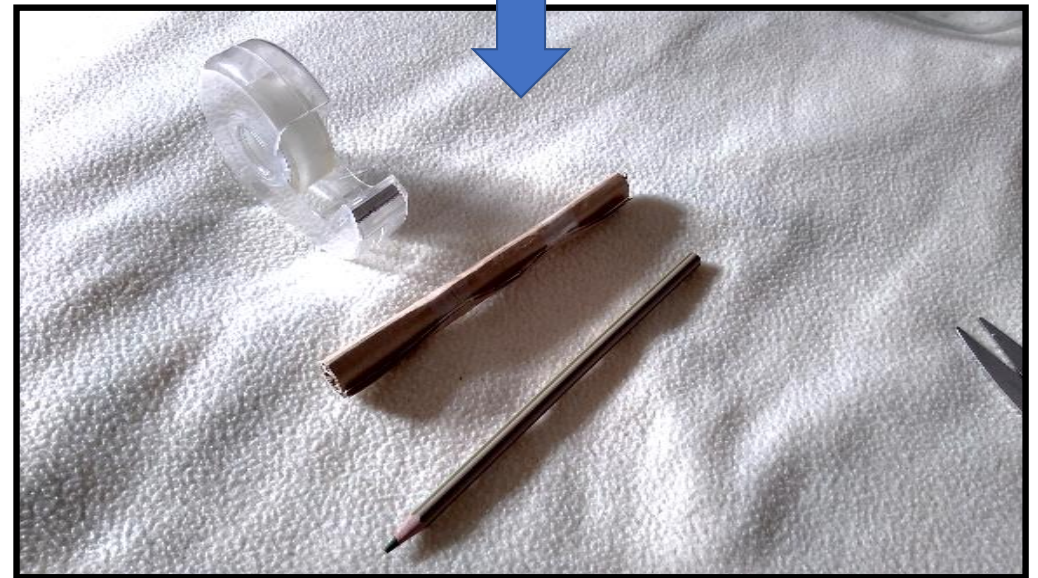
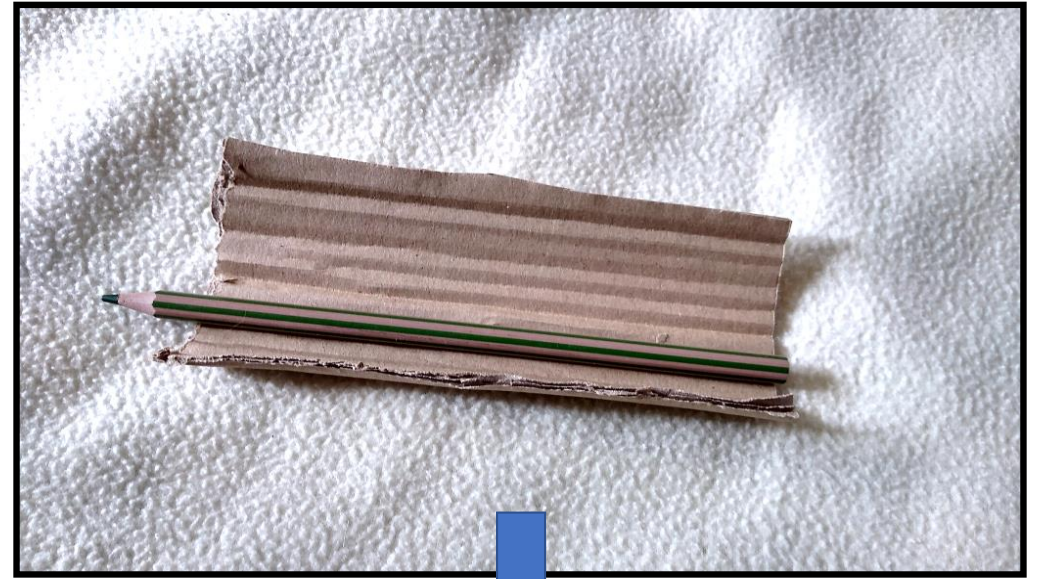
## Step 3:

- Feed some twine through the hole and tie a knot



## Step 4:

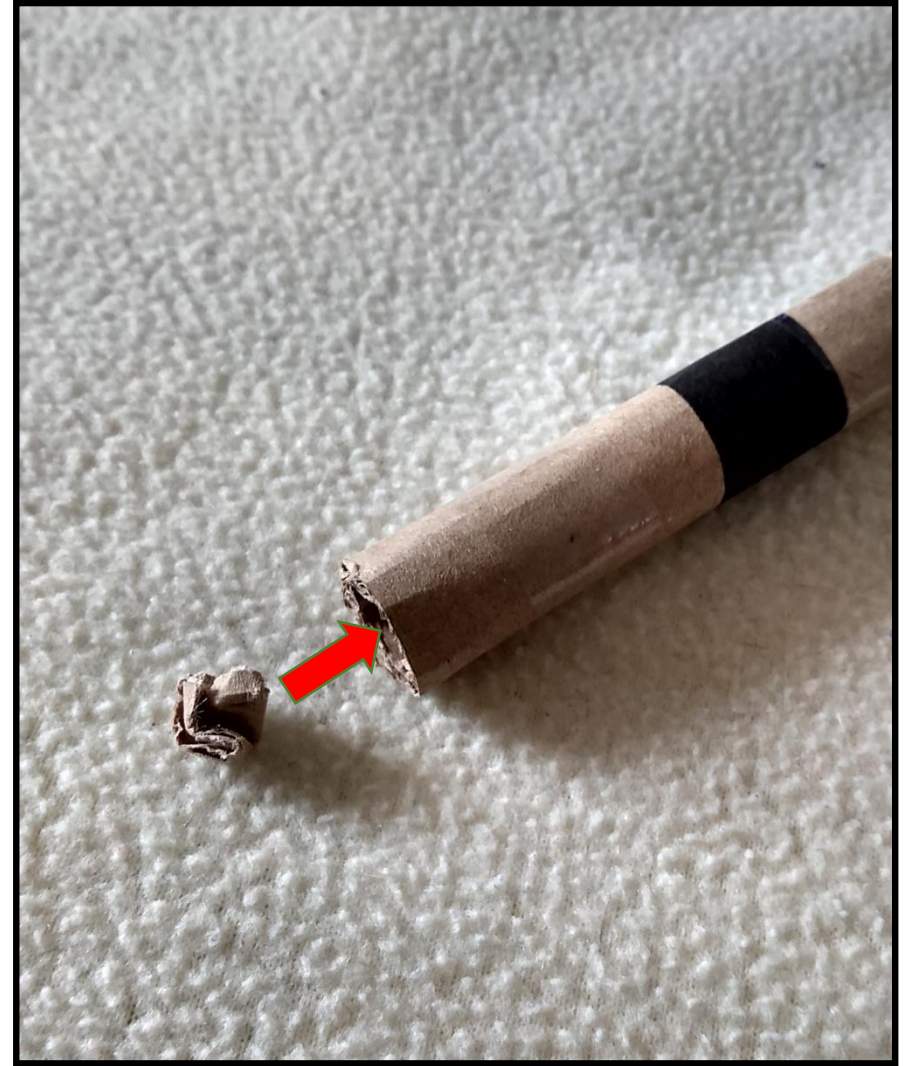
- Cut some strips of cardboard and roll them around a pencil.
- Wrap some sticky tape around the cardboard tube and remove the pencil.





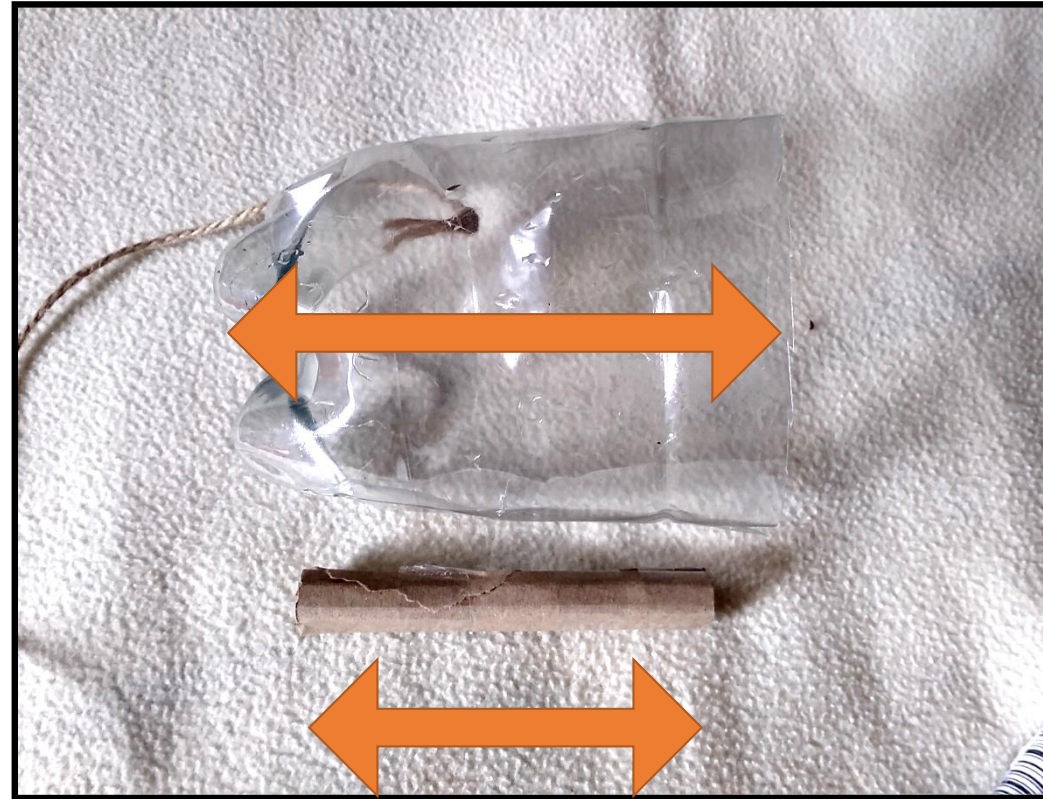
## Step 5:

- Block one end of the tube with a piece of rolled cardboard.



## Step 6:

- Make as many of these tubes as you need to fill the bottle, and ensure they're shorter than the depth of the bottle (so that they don't get wet when it rains.) Larger bottles will need lots of tubes, so use a smaller bottle if needed.



Step 8:

Insert the tubes  
(blocked end first)  
into the bottle,  
ensuring that there's  
enough so that they  
stay in tightly.



## Step 9:

Hang your finished bee hotel at least 1m from the floor on an east facing wall (so that it catches the morning sunshine!). Ideally, hang it in a place with not much wind. Hopefully some bees will move in soon!

